







Great Sound with a Living dimension

Back in the days before anyone had ever heard of 'designer' products and hi-fi came with wardrobe-like enclosures and racks of chunky boxes, Monitor Audio invented the Radius Series of stylish and versatile speaker systems. So radical was the idea that it changed expectations of home entertainment forever.

It seems perfectly natural for today's audio fans to appreciate and expect a strong element of design in every product, but in 2003 it was new. Sure there existed super-chic systems, but they were also super-expensive and not considered as proper 'hi-fi'. Radius was democratically priced, and from a respected hi-fi brand. It proved that real hi-fi could also be unashamedly stylish, space-efficient and easy to live with. In other words harmonious in every way.

From the options available, music and film lovers could choose a speaker system that not only delivered the wide natural response of a genuine Monitor Audio design, it could also match the shape and colour of their rooms. This was revolutionary. The world's first widely available 'designer' speakers met with worldwide acclaim on launch, followed by repeat critical applause for subsequent upgrades, including a coveted Europe-wide EISA award in 2009.

Now, imbued with a rich heritage of innovation and energised by our latest driver technologies, the next generation of Radius has arrived, complete with new models, greater versatility and higher, wider, deeper sound. Living with great audio has never been easier.

Perfect Chemistry of Design & Performance

With its jewel-like size and lustre, the appeal of new Radius is truly timeless, but its flexibility and performance set new standards. The eight-strong model line-up includes still slimmer versions of the 225 centre speaker and Radius One soundbar, together with a new Radius 200 centre-channel for shelf or rack mounting, and two enormously powerful yet super-compact active subwoofers: Radius 380 and 390.

The precision of the new Radius design, available in a choice of the most popular gloss black, white and walnut finishes, is emphasised by its smoothly chamfered cabinet edges and the stylish silver profiles of the driver surrounds. Each satellite will look perfectly at home fitted snugly to the wall on an integrated fixing point designed for any standard wall bracket, or Monitor Audio's own MASM speaker mount, optional for Radius 45 and 90. The new Radius 225 and Radius One are complete with their own wall-mounting plates. Naturally the floor-standing Radius 270 tower, the new Radius 200 and the ground-breaking Radius subs demonstrate the peerless installation versatility of the Radius approach, mixing acoustically-matched floor and wall designs for maximum audio and visual effect.





Once your choice of Radius speakers is in place, you'll want to complement their clear, dynamic wideband response with the seismic presence of our wholly upgraded Radius sub cubes.

These ultra-compact bass engines represent a major leap forward in design and performance over their predecessors, generating jaw-dropping deep bass impact from side-firing systems of active and passive drivers – colour-coded to match cabinet finish - and massively up-rated amplifiers. The 380 has twin 8" drivers powered by a 200W Class D amplifier – twice the power of the Radius 360 it replaces; the 390 uses twin 10" drivers powered by a 220W Class D amp. Both amplifiers are DSP controlled and the passive ABR drivers are tuned low to produce deep, taut, size-defying bass. Impact, music and movie EQ presets and a 12V trigger on each cube will help you to customise their miraculous low frequency output to your system and room. It's all part of the Radius magic!



Pure C-CAM® Drivers

The new Radius subs and satellites owe their extraordinary sound quality to break-through engineering by Monitor Audio's design team. In all but the diminutive Radius 45, the new range utilises C-CAM drivers throughout.

C-CAM is Monitor Audio's signature driver material, which has been refined over many years and features in all of our award-winning speakers, including the flagship models. Ceramic-Coated Aluminium/Magnesium is an innovative material originally developed by the aerospace industry for use as blades in jet engines. It has ideal qualities as a driver cone, being extremely light but also very strong - it doesn't bend like more conventional materials. This means you hear clearer, wider, more dynamic sound, even at high volumes.

New Tweeters

The new Radius 1" (25mm) C-CAM tweeter has been optimised to deliver the finest and widest performance within the compact Radius cabinets. It benefits from a more efficient rear-venting design, releasing air trapped and compressed at the back of the tweeter dome, and guiding it around the drive assembly to a rear-loading chamber. A more fluid movement of the dome lowers resonance and distortion across a wider operating range for greater accuracy, and a smoother, more natural crossover with the bass driver.

New Bass Drivers

All new bass drivers feature concave cone profiles, introduced by our top-of-the-range Platinum speakers and applied subsequently to Gold GX. The key design breakthrough for Radius is the integration of new cone geometry and drive mechanisms, involving a continuous radiating dish innovatively coupled to a new more efficient drive assembly. Unlike traditional driver cones, the voice-coil of the Radius drivers sits beneath the cone rather than protrude through it, permitting a completely unbroken driver surface for greatly improved strength and fidelity. Extensive research and FEA modelling have allowed us to perfect the relationship between the new radiating diaphragm and its motor design, introducing larger motor sizes and voice coils for increased excursion, higher power capability and reduced distortion.

HiVe[®] II port design

Straight from Platinum's design blueprint, the HiVe II reflex port makes its Radius debut. It's shaped to have the same effect on airflow as a gun-barrel on a bullet. Rifled grooves inside the port help to accelerate the flow and reduce turbulence, so air moves in and out of the port more efficiently, for a faster more dynamic bass response.

Design For Sound

For the first time the very original Radius series gave music and home cinema fans a living dimension to hi-fi sound. New Radius expands that dimension still further, with more ways to experience genuine fidelity perfectly in-tune with your home.



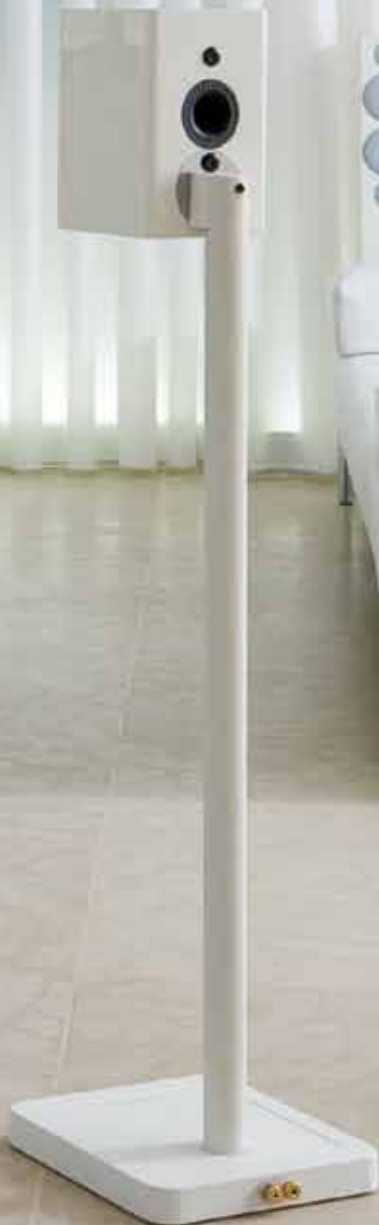


WHAT HI-FI?
SOUND AND VISION
WHATHIFI.COM
AWARDS 2013
SPEAKER PACKAGES
BEST STYLE PACKAGE £1400-£1800
MONITOR AUDIO RADIUS R90HT1

WHAT HI-FI?
SOUND AND VISION
WHATHIFI.COM
★★★★★

What Hi-Fi? October 2013

“Classy looks; balanced sound; excellent integration; controlled bass; clear dialogue.”



“They might look small, but they pack one hell of a mighty punch”

Hi-Fi Choice Magazine November 2013



Radius 45 super-compact speaker cube

The diminutive Radius 45 cube is the epitome of Radius innovation: a speaker so small has no right to sound as good as it does, yet miraculously the 45 reveals astonishing mid-range clarity and high frequency ambience from its 3" (75mm) MMP II mid-bass driver and rear-firing 3/4" (19mm) C-CAM tweeter. It's perfect for ultra-discreet sound all around the home, or partnered with the Radius 380 sub for explosive stereo from an ultra-compact system. The new Radius 45 is also good for surround sound duties in a smaller room. It incorporates a single point 1/4" x UNC (20TPI) wall fixing for use with the optional MASM speaker mount or any standard wall bracket. Alternatively, fit the 45 to our Radius floor stands, which utilise innovative floor-level connections for a luxury wire-free look.



Radius 90 compact 2-way monitor

The original hi-fi mini monitor, and respected by all. Radius 90 continues to evolve, delivering a greater size-defying performance than ever before. New Radius 90 incorporates a 4" (100mm) C-CAM bass driver and 1" (25mm) C-CAM tweeter for a tuneful, controlled and powerful sound in pairs or combined as front and rear speakers in an AV system along with the 200 or 225, and the 380 or 390 sub. Use the optional MASM speaker mount or any standard wall bracket for wall mounting via the 90's single point fixing. Optional floor stands expand the installation possibilities still further.

Radius 200 compact centre-channel speaker

New to Radius, the Radius 200 centre-channel speaker is designed for rack or shelf mounting in a dedicated home theatre system and room. The driver configuration mirrors that of the 225, and so the 200 has the pedigree and fire-power to capture the detailed dynamics and vocal textures of today's high definition movie soundtracks. Placed front and centre in a serious AV system, the still compact Radius 200 will anchor the entire sound field with life-like fidelity.



Radius 225 compact LCR

The slender Radius 225 is even slimmer than its predecessor. At just 65mm in depth, the 225 is the perfect match with today's ultra-thin displays. Use it as a centre channel or main speaker: its acoustic design of twin 4" (100mm) C-CAM mid/bass drivers astride a 1" (25mm) C-CAM tweeter delivers superb accuracy from horizontal and vertical positions. Extend bass further by adding the awesome 380 or 390 subs for breathtaking full-range AV or stereo sound. The new 225 may be thinner physically, but its performance will fill the air with exhilarating audio wall-to-wall. A dedicated wall bracket is included with the 225.

Radius 270 compact floorstander

Gorgeous looks allied to our award-winning speaker engineering allow the new Radius 270 to make an emphatic design statement in any room and in both music and AV systems. It offers the naturally fluid full-range sound of our acclaimed hi-fi speaker ranges in an elegantly proportioned tower, which is easy to position and simply radiates lifestyle appeal. Use the 270 with the 225 or 200 for scintillating home theatre audio, or with the 380 or 390 sub in a

discreet, super-chic two-channel system worthy of the finest room designs and media collections. Its statuesque cabinet houses a precision-crafted Radius driver system of twin 100mm (4") C-CAM mid/bass drivers and a 25mm (1") C-CAM tweeter, which ensures perfect acoustic matching with other Radius speakers in multi-channel applications, and the wide, even quality of sound that reflects the expertise of its engineering and heritage.

Radius One compact soundbar

The Radius One takes over from the original Radius soundbar with a beefed up driver complement in a purer, acoustically-matched configuration. It incorporates a string of C-CAM drivers arranged in three sets of 100mm (4") bass driver/ 25mm (1") tweeter pairings, each with its own dedicated reflex-ported chamber. It's a bit like three Radius 90s in a single convenient cabinet, contoured to match the widescreen aesthetics of larger flat TVs. With all this technology onboard you'd expect the Radius One to occupy the same space

as its predecessor. In fact it's smaller. The innovative shallow-profile drivers introduced by the new Radius series allow us to generate the triple impact of left, centre and right channels from a cabinet reduced in depth by a whopping 40 percent! Aesthetically it's as effective – a single grille will complement the uniform look of thin displays for a beautifully integrated home theatre solution; easy to install, impressive to behold and experience. Our dedicated wall bracket is included.





Radius 380 compact subwoofer

Since the last Radius series we've applied our research and development to the challenge of subwoofer design. It's relatively easy to produce large bass in a large box, but finding the optimum mix of parameters required to generate genuinely deep dynamic bass from a space efficient Radius cabinet requires a vastly more innovative approach. We're confident that the ultra-compact Radius 380 will elevate your expectations of what's possible in a small enclosure: the Radius 380 and its companion 390 rewrite the rules. Within the 380's diminutive cube, twin side-firing 8" C-CAM drivers - one active and one passive ABR - work in tandem with a powerful 200W cool-running Class D amplifier (double the power of its predecessor) to deliver a seismic bass foundation for films and music, distinguished by an intoxicating blend of depth and speed. Tuned for an utterly dynamic result with Radius satellites in film and music systems, the 380 also offers Impact, Movie and Music pre-sets for easy EQ operation. The drivers have no grilles but are colour-coded to coordinate with cabinet finish. A 12V trigger syncs the 380 with other AV components when the system is activated.



Radius 390 compact subwoofer

Promising the astonishing low frequency resolution of the 380 with the added depth, impact and control of a larger bass engine, the Radius 390 demolishes assumptions of size versus performance. With every earth-shaking transient, you'll be more convinced that the compact 390 is truly 'ground-breaking' in form and function. A system of twin colour-coded 10" C-CAM active/ABR drivers is powered by a 220W Class D amplifier to expand levels of output and extension, releasing a rich layer of penetrating bass, mesmerising in its consistency and scale. You'll get agility as well, for rhythmic depth with music, and dynamic reinforcement in home theatre systems - all this from a beautiful little cube that liberates living space. In tune with Radius philosophy the 390 is perfect for lifestyle but sonically it's in a class of its own. Enjoy rapid EQ optimisation from Impact, Music and Movie settings, and system automation via the 12V trigger.

	Radius 45	Radius 90	Radius 200	Radius 225	Radius 270	Radius ONE
Frequency Response	120Hz - 20KHz	80Hz - 35KHz	60Hz - 35KHz	80Hz - 35KHz	50Hz - 35KHz	90Hz - 35KHz
Sensitivity (1W@1M)	87dB	83dB	86dB	87dB	87dB	87dB
Nominal Impedance	8 Ohms	8 Ohms	6 Ohms	6 Ohms	6 Ohms	6 Ohms
Power Handling Single (RMS)	25W	75W	100W	100W	100W	75W
System Power Handling (RMS)	50W	100W	150W	150W	150W	100W
Recommended Amp. Requirements	15-50 W	30-100 W	40-150W	40-150W	40-150W	30-100W
Maximum SPL (dBA)	101	102	106	107	107	106
Bass Alignment	Sealed Cabinet	Bass reflex - rear ported	Bass reflex - rear ported	Bass reflex - front ported	Bass reflex - front and rear ported	C:Bass reflex - front ported L/R:Bass reflex - side ported
Drive Unit Complement	1 x 3" (75mm) MMP®II cone bass/mid driver. 1 x 3/4" (20mm) C-CAM® gold dome tweeter	1 x 4" (100mm) C-CAM cone bass/mid driver. 1 x 1" (25mm) C-CAM gold dome tweeter	2 x 4" (100mm) C-CAM cone bass/mid driver. 1 x 1" (25mm) C-CAM gold dome tweeter	2 x 4" (100mm) C-CAM cone bass/mid driver. 1 x 1" (25mm) C-CAM gold dome tweeter	2 x 4" (100mm) C-CAM cone bass/mid driver. 1 x 1" (25mm) C-CAM gold dome tweeter	3 x 4" (100mm) C-CAM cone bass/mid driver. 3 x 1" (25mm) C-CAM gold dome tweeter
Cabinet Dimensions (H x W x D)	100 x 100 x 100 mm (3 ^{15/16} x 3 ^{15/16} x 3 ^{15/16} Inches)	198 x 125 x 140mm (7 ^{13/16} x 4 ^{15/16} x 5 ^{1/2} Inches)	125 x 330 x 140mm (4 ^{15/16} x 13 x 5 ^{1/2} Inches)	In vertical orientation; 610 x 140 x 67mm (24 x 5 ^{1/2} x 2 ^{5/8} Inches)	1000 x 177 x 208mm (39 ^{3/8} x 6 ^{15/16} x 8 ^{3/16} Inches) Inc Plinth, Without Spikes	175 x 980 x 67mm (6 ^{7/8} x 38 ^{9/16} x 2 ^{5/8} Inches)
External Dimensions (Inc grille and terminals) (H x W x D)	100 x 100 x 124mm (3 ^{15/16} x 3 ^{15/16} x 4 ^{7/8} Inches)	198 x 125 x 164mm (7 ^{13/16} x 4 ^{15/16} x 6 ^{7/16} Inches)	125 x 330 x 164mm (4 ^{15/16} x 13 x 6 ^{7/16} Inches)	In vertical orientation; 610 x 140 x 77mm (24 x 5 ^{1/2} x 3 ^{1/16} Inches)	1025 x 177 x 208mm (40 ^{3/8} x 6 ^{15/16} x 8 ^{3/16} Inches) Inc Plinth, With Spikes	175 x 980 x 79mm (6 ^{7/8} x 38 ^{9/16} x 3 ^{1/8} Inches)
External Dimensions (Inc grille and bracket) (H x W x D)	100 x 100 x 162mm (3 ^{15/16} x 3 ^{15/16} x 6 ^{3/8} Inches) (Bracket - optional MASM)	198 x 125 x 203mm (7 ^{13/16} x 4 ^{15/16} x 8 Inches) (Bracket - optional MASM)	N/A	In vertical orientation; 610 x 140 x 84mm (24 x 5 ^{1/2} x 3 ^{5/16} Inches) (Dedicated bracket included)	N/A	175 x 980 x 84mm (6 ^{7/8} x 38 ^{9/16} x 3 ^{3/16} Inches) (Dedicated bracket included)
Weight (each)	1Kg (2lb 4oz)	2.1Kg (4lb 10oz)	3.6Kg (7lb 14oz)	4.2Kg (9lb 4oz)	9.9Kg (21lb 12oz)	7.4Kg (16lb 4oz)

	Radius 380	Radius 390	Radius 380	Radius 390
System Format	Active sub-woofer system – Auxiliary (ABR) loading. 18mm MDF cabinet		Driver Complement	1 x 8" (200mm) C-CAM® long throw driver. 1 x 8" (200mm) Auxiliary bass radiator
Low Frequency Limit	30Hz (- 6dB)		Input Impedance	> 20K Ohms
Upper Frequency Limit	Variable 40 – 120 Hz @ 24dB/Octave		Mains Input Voltage	AC 110 - 120 V ~ 50/60Hz; AC 220 - 240 V ~ 50/60Hz (Factory Region Preset)
Amplifier Power Output	200 Watts @ 1% THD+N	220 Watts @ 1% THD+N	Dimensions (H x W x D) (Including amp & feet)	308 x 290 x 305mm (12 ^{1/8} x 11 ^{7/16} x 12 Inches)
Amplifier Classification	Class D amplifier with Switch mode power supply (SMPSU)		Connections	Stereo RCA in, LFE in, 12v Trigger in (3.5mm mono mini-jack)
Bass EQ Switch	Music/ Movie/ Impact		12v Trigger Input	5 - 12v via 3.5mm mono mini-jack socket
Phase Control	0 & 180 degrees		Power Consumption	200 Watts / 0.5 Watts in Standby (ErP approved)
Auto Sensing	Line Level >3.5mV		Weight (Unpacked)	10.16Kg (22lb 6oz)
Input Level Requirements	Standby after approximately 15 minutes if no signal sensed			220 Watts / 0.5 Watts in Standby (ErP approved)
				13.76Kg (30lb 4oz)



Monitor Audio Ltd
24 Brook Road, Rayleigh
Essex, SS6 7XJ
England
Tel: + 44 (0)1268 740580
Fax: + 44 (0)1268 740589
Email: info@monitoraudio.co.uk

monitoraudio.com
Designed in the United Kingdom